

Display Options

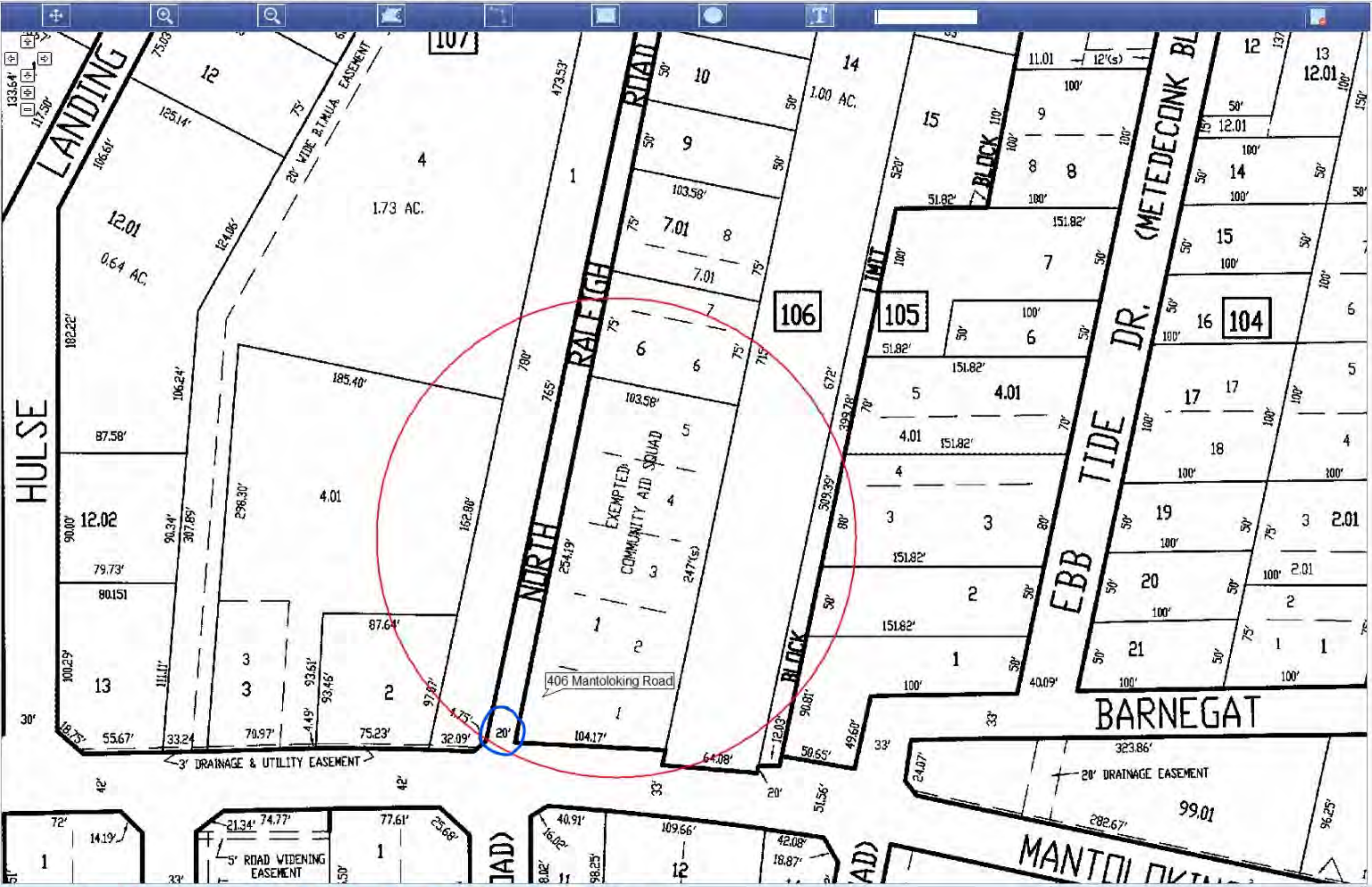
- Show Toolbar
- Update Map

Print Map

- Original Map
- Current Map Display
- With Detailed Data
- With Summary Data

Print Map

Show GIS Map



Assessment Sales History (1)

LOMBARDI RESIDENTIAL LLC  
 406 MANTOLOKING RD.  
 BRICK NJ 08723

County: OCEAN  
 Town: BRICK TOWNSHIP  
 Block: 106 Lot: 1 Qual:

Property Type: COMMERCIAL  
 Land Value: \$260,300 Total Value: \$422,000  
 Imp. Value: \$161,700 (38.31)  
 Zoning: R75 Year Built:  
 Property Tax: \$9,722.88 Tax Year: 2019  
 Building Desc: 25F2G 6914  
 Lot Size: .6364AC Asmt. Year: 2004  
 Land Sq Ft: 27722 Acres: 0.64  
 Build. Sq Ft: Stories: 2